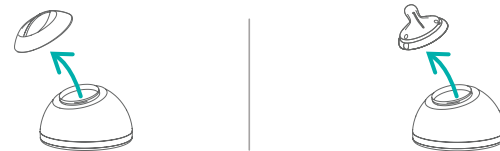
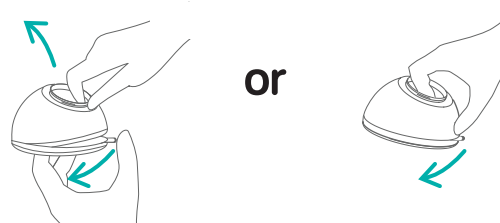


DISASSEMBLE

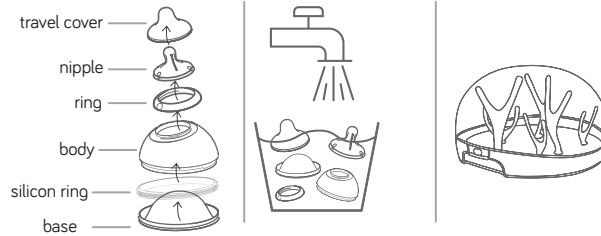
Step 1 Remove storage cap or nipple and ring prior to disassembling the bottle.



Step 2 To disassemble your nanobebe bottle simply push down on the lip (as shown) to release the base from bottle body.



CLEANING AND STERILIZING



- Before first use, disassemble all parts and sterilize in a bowl with boiling water for 5 minutes. Wash in warm soapy water and rinse thoroughly. Dishwasher safe.
- It is recommended that the white silicone ring, located on your bottle body, be removed and cleaned after each use.
- After each use, sterilize using a nanobébé Microwave Steam Sterilizer or in boiling water for 5 minutes.

FOR YOUR CHILD'S SAFETY

WARNING! Never use this product without adult supervision. • Never use feeding nipple as a pacifier. • Continuous and prolonged sucking of fluids will cause tooth decay. • Do not heat on the stovetop. Do not place in a heated oven. • Always check food temperature before feeding. • When using formula, follow the formula milk manufacturer's instructions and allow the freshly boiled water to cool before pouring into the bottle. • To ensure the bottle functions correctly and to prevent leakage, always ensure nipple screw ring is tightly and evenly closed and bottle body is flush with bottle base. • Expressed breastmilk can be stored in sterilized nanobébé bottles in the refrigerator up to 48 hours (not in the door) or the freezer for up to 3 months. Never refreeze breastmilk or add fresh breastmilk to already frozen milk. • Always wash your hands thoroughly and ensure surfaces are clean before contact with sterilized components. Do not place components directly on surfaces that have been cleaned with antibacterial cleaning agents.

Maintenance

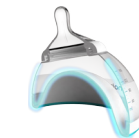
Before each use, inspect all items. Pull the nipple in all directions. Throw away at first signs of damage or weakness. • Do not leave a nipple in direct sunlight or heat, or leave in disinfectant ("sterilizing solution") for longer than recommended, as this may weaken the nipple. • Do not store with or allow to come into contact with solvents or harsh chemicals. • Keep all parts not in use out of reach of children. • For safety and hygiene reasons we recommend that the nipple be replaced at least every 2 months. • Excessive concentration of detergents may eventually cause plastic components to crack. To save storage space, stack two or more nanobébé feeding bottles sealed with storage caps • If not in use for over a week, the nanobébé feeding bottle should be stored disassembled.

*The included nanobébé adaptor fits the majority of pumps sold on the market.

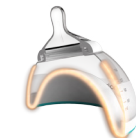
CLINICAL BENEFITS

Designed to Preserve Breastmilk Nutrients

Breastmilk contains everything your baby needs to be healthy. But according to recent clinical studies, storing and warming breastmilk may dramatically reduce its nutritional and immunological value. The nanobébé feeding bottle is designed to preserve vital milk nutrients during storage and warming. Its increased surface area enables quick and even heat exchange. After pumping, it cools quickly in the freezer or fridge, which reduces bacterial growth. Our bottle warms quickly at safe temperatures, allowing you to feed your hungry baby promptly, without sacrificing the nutritional value of the milk that can be damaged with overheating.



Fast Cooling
Reduces bacterial growth



Even Warming
Prevents overheating

Mimics Breastfeeding

Babies simply love to hold the nanobébé feeding bottle. Its domed shape and concave base make it ideal for tiny hands, so babies only a few months old can easily hold it. Thanks to its breast-like design, the bottle makes it easier to combine breast and bottle feeding.

nanobébé



More from nanobébé

Electric Bottle Brush

Ultrasonic vibrations for thorough, easy cleaning

Flexy Pacifier

Extra-soft nipple
Lightweight & ergonomic

Breastmilk Bags and Organizer

Fast thawing for optimal nutrient preservation

Compact Drying Rack

Fast, hygienic drying
Stores flat

Microwave Steam Sterilizer

Quickly eliminates 99.9% of bacteria

Smart Warming Bowl

Quick & even warming
Optimal for breastmilk

Made in Israel for
Nutrits Ltd.
P.O. Box 7239
Tel Aviv, Israel 6107121

Visit nanobebe.com to learn more.
Customer service: 1.800.403.0498

nanobébé

How to Use Your nanobébé Bottle



ASSEMBLY

Step 1 Remove storage cap or nipple and ring prior to assembling the bottle.



Step 2 Simply push the bottle body into the base (do not attempt to twist shut).

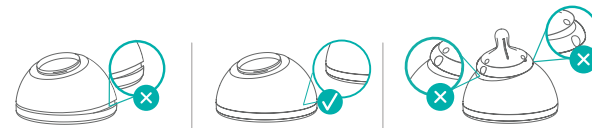


Place base on a flat surface and push bottle body down into it **or** Holding the base and bottle body across from each other, simply push together

INSTRUCTIONS

Preventing leaks

Make sure all edges are evenly aligned and sealed tight.



Hold this way to feed

Hold the bottle between your fingers and thumb. Make sure milk fills the nipple. With adult supervision, baby may hold the bottle while feeding.



PUMPING AND STORING

Pump directly into bottle

*The included breast pump adaptor fits the majority of pumps on the market.



then

Seal with storage cap and stack bottles deep in refrigerator



Storage cap included

Track pumping order and save space

FREEZING BREASTMILK

Use adaptor to pour into storage bag and freeze



then

After defrosting, pour milk into bottle



WARMING

Option 1: Use your nanobébé Smart Warming Bowl:

Water level should not reach the nipple ring

1 Place the bottle, with the nipple and travel cover on, upon the dome at the base of the bowl to prevent any air pockets.



2 Fill the bowl with warm tap water to the designated fill line marked inside the bowl.



3 Hold by the travel cover and swirl. Water level should not reach the nipple ring.



4 Remove from water, check temperature, if further warming is needed return to step 1 and repeat the process, then enjoy feeding your baby!



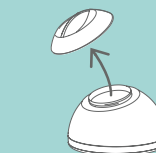
Bottle will naturally float upwards as the breastmilk begins to be surrounded by water and the warming process begins.

WARMING

Option 2: Warm your nanobébé bottle in a standard bowl filled with warm water. Fluid level should not reach the nipple ring. Tilt the bottle gently to remove any trapped air underneath, then swirl the bottle inside the water until the desired temperature is reached. If the milk has not reached body temperature, return to step 1 and repeat the process.

Always check the temperature of the milk before feeding your baby by dropping few drops on the inside of your wrist.

Important Reminder:



Storage cap must be removed from bottle prior warming



Replace with nipple and travel cover!