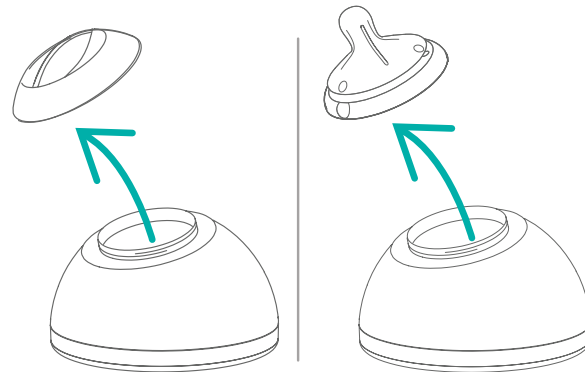


How to Use Your nanobébé Bottle



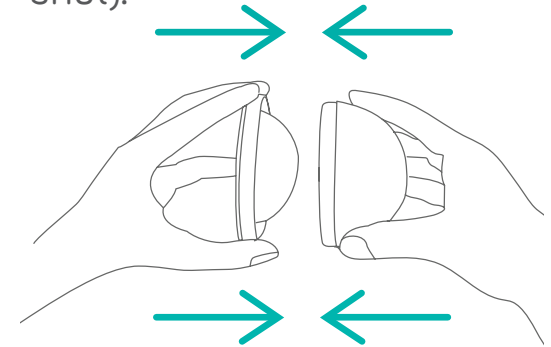
Step 1

Remove storage cap or nipple/teat and ring **prior to assembling** the bottle.



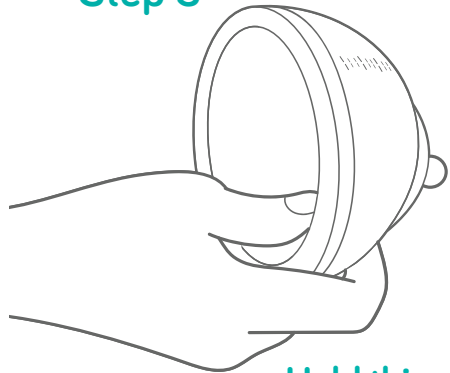
Step 2

Simply push the bottle body into the base (do not attempt to twist shut).



PUSH ALL THE WAY IN

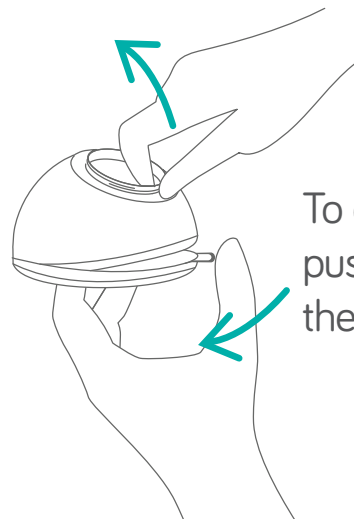
Step 3



Hold this way to feed

Hold the bottle between your fingers and thumb.

Step 4

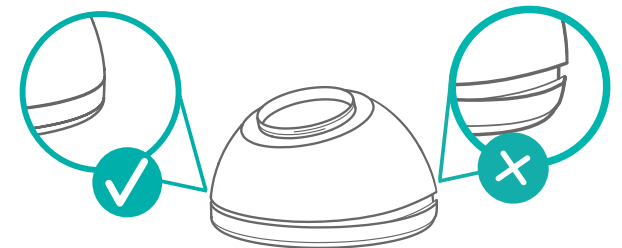


To disassemble push down on the lip.

Preventing leaks



Make sure all edges are evenly aligned and flush tight.



Make sure all parts are **DRY AND OIL FREE**

FOR YOUR CHILD'S SAFETY AND HEALTH

WARNING! Always use this product with adult supervision. • Never use feeding nipple/teat as a pacifier/soother. • Continuous and prolonged sucking of fluids will cause tooth decay. • Do not heat on the stovetop. Do not place in a heated oven. • Always check food temperature before feeding. • When using formula, follow the formula milk manufacturer's instructions and allow the freshly boiled water to cool before pouring into the bottle. • To ensure the bottle functions correctly and to prevent leakage, always ensure nipple/teat screw ring is tightly and evenly closed and bottle body is flush with bottle base. • Expressed breastmilk can be stored in sterilized nanobébé bottles in the refrigerator up to 48 hours (not in the door) or the freezer for up to 3 months. Never refreeze breastmilk or add fresh breastmilk to already frozen milk. • Always wash your hands thoroughly and ensure surfaces are clean before contact with sterilized components. Do not place components directly on surfaces that have been cleaned with antibacterial cleaning agents.

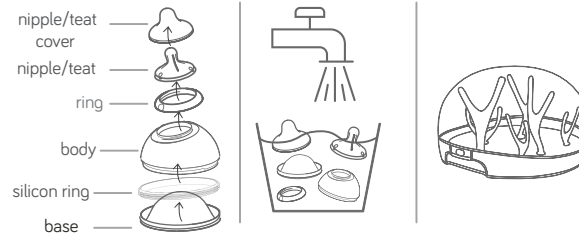
Maintenance

Before each use, inspect all items. Pull the nipple/teat in all directions. Throw away at first signs of damage or weakness. • Do not leave a nipple/teat in direct sunlight or heat, or leave in disinfectant ("sterilizing solution") for longer than recommended, as this may weaken the nipple/teat. • Do not store with or allow to come into contact with solvents or harsh chemicals. • Keep all parts not in use out of reach of children. • For safety and hygiene reasons we recommend that the nipple/teat be replaced at least every 2 months. • Excessive concentration of detergents may eventually cause plastic components to crack. To save storage space, stack two or more nanobébé feeding bottles sealed with storage caps. • If not in use for over a week, the nanobébé feeding bottle should be stored disassembled.

Made in Israel for Nutrits Ltd.
P.O. Box 7239 Tel Aviv, Israel 6107121

Visit nanobebe.com to learn more.

CLEANING AND STERILIZING



- Before first use, disassemble all parts and sterilize in a bowl with boiling water for 5 minutes. Wash in warm soapy water and rinse thoroughly. Dishwasher safe.
- It is recommended that the silicone ring, located on your bottle body, be removed and cleaned after each use.
- After each use, sterilize using a nanobébé Microwave Steam Sterilizer or in boiling water for 5 minutes.
- **Do not sterilize nor heat the bottle on stove (gas or electric), doing so will impact the bottle's functionality.**

nanobébé



TO PREVENT SPILLS

Use this cap (not the nipple/teat) when travelling with your nanobébé bottle.



100% Satisfaction Guarantee!
Contact us anytime at support@nanobebe.com

More from nanobébé



Bottle Cooler & Travel Pack

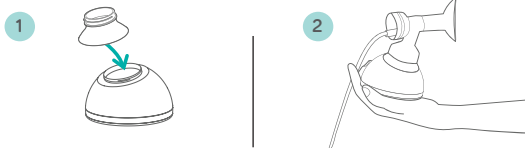
Multi-layered insulated baby bottle cooler.

Safely store and transport breast milk for on-the-go parents!

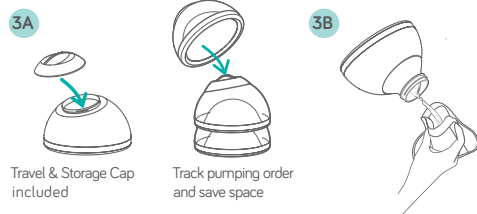
PUMPING AND STORING

Pump directly into bottle

For parents using our Stage 2 transition bottle or Wide-Neck pumps, Adapters are available and sold separately.



Seal with storage cap and stack bottles deep in refrigerator or use adapter to pour into storage bag and freeze



Travel & Storage Cap included

Track pumping order and save space

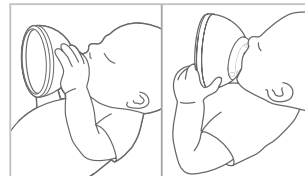
FEEDING AND WARMING



NEVER use boiling water
Warm bottle in warm tap water with nipple/teat **ONLY**
NEVER use travel & storage cap while warming



With adult supervision¹ baby may hold the bottle while feeding.



¹It is highly recommended to use the Nanobebe smart warming bowl for warming our nanobebe bottles (Sold separately)*

FLEXY PACIFIER/SOOTHER

Flexy Pacifier/Soother

Extra-soft Nipple/teat
Lightweight & ergonomic

- One piece silicone construction
- Adheres to the American Academy of Pediatrics' guidelines for newborns
- Nipple/teat specially designed to promote healthy oral development



Suitable for sterilization in the nanobébé Microwave Steam Sterilizer or boiling water for at least 5 minutes. After sterilization please allow nipple/teat to cool for at least 5 minutes and remove any trapped water before use. For your child's safety

For your child's safety WARNING! Do not tie pacifier/soother around child's neck as it presents a strangulation danger. In the event the pacifier/soother becomes lodged in the mouth, DO NOT PANIC; it cannot be swallowed and is designed to cope with such an event. Remove from the mouth with care, as gently as possible. Always use this product under adult supervision. Do not leave a pacifier/soother in direct sunlight or near a source of heat, or leave in disinfectant (sterilizing solution) for longer than recommended, as this may weaken the nipple/teat. Never dip nipple/teat in sweet substances or medication, your child may get tooth decay. Before first use, place in boiling water for 5 minutes (may cause slight color change), allow to cool and squeeze out any trapped water from the pacifier/soother. This is to ensure hygiene. Clean before each use. The pacifier/soother can be cleaned by washing with warm water. DO NOT use abrasive cleaning agents or antibacterial cleaners on the pacifiers/soothers. Excessive combinations of detergents may eventually cause components to crack. Should this occur, replace your pacifier/soother immediately. Wash your hands thoroughly and ensure surfaces are clean before contact with sterilized components.

WARNING: Please check the nipple/teat before use by pulling. Throw away at the first signs of damage or weakness. For safety and hygiene replace the pacifier/soother after 4 weeks of use. * The nanobébé Flexy pacifier/soother is included in both our Starter Set and the Newborn Gift Set. * While not included in the single or triple bottle packages, our award winning flexy pacifier/soother is available and sold separately.

G10-00333-19-1